

Please note when entering production sites on a guided tour:

We do a lot for the safety of people and the environment. Please read the following information carefully for your own safety and act accordingly, even if you are only on our premises for a short time.

**Safety does not tolerate compromises!**



Use the sidewalks and crosswalks.



Wear the safety vests provided by us.



Wear the prescribed protective equipment. You can obtain the necessary equipment from your contact person if required.



The rules of the German traffic regulations apply on site. The maximum speed is **10 km/h**. During operations with blue lights and sirens, all emergency vehicles have priority.



Smoking is strictly prohibited on site. Rooms in which smoking is permitted are specially marked.



Photography and filming are generally prohibited; exceptions require special permission.



There is an absolute ban on alcohol on site. Carrying alcohol is also prohibited.



Do not step under suspended loads.



Keep a safe distance from machinery and equipment.



Operating areas with potentially explosive atmospheres are marked with "EX". In these marked areas, the carrying and use of non-Ex-protected devices is prohibited (e.g. cell phones, smartwatches, fitness bracelets, hearing aids, lighters, etc.).

Krugbäckerstraße 18  
56424 Mogendorf  
+49 2623 600-375

At our location in Mogendorf you will visit the following company of the Steuler Group:

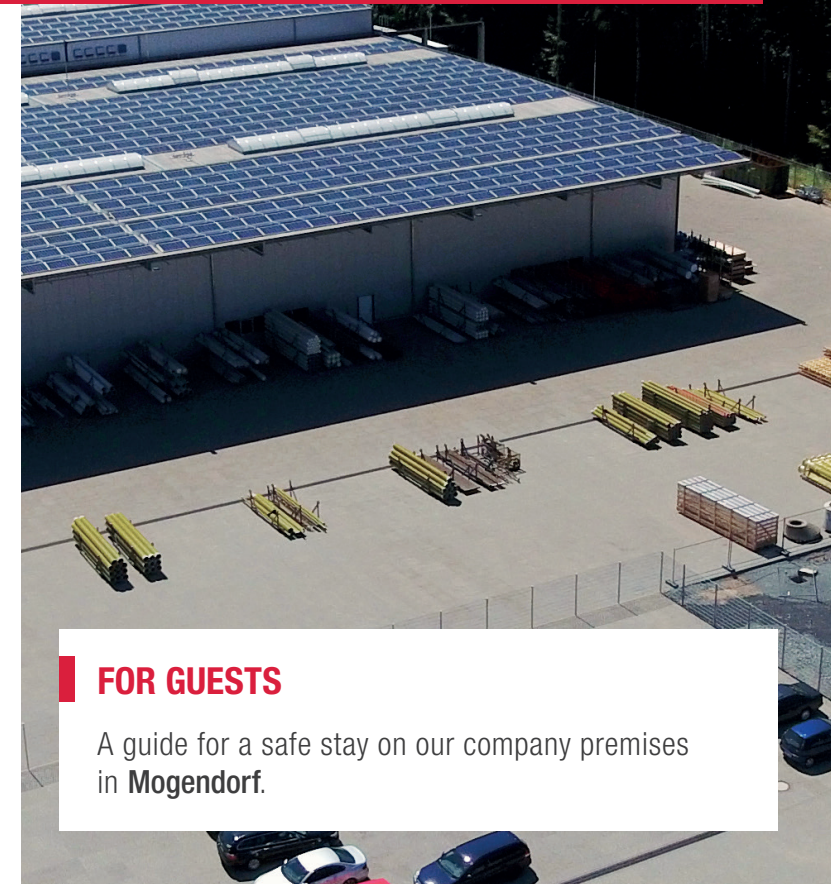
**STEULER-KCH GmbH**

Version 12/2023

**STEULER**

**STEULER**

**SAFETY ON SITE**



**FOR GUESTS**

A guide for a safe stay on our company premises in **Mogendorf**.

## Information about the company

Founded in 1908, the Steuler Group is now one of the world's leading specialists for industrial linings and equipment engineering. Sustainable workmanship, innovative technologies and over 2,200 team players with years of expertise at 20 international locations are the guarantors of the Steuler Group's success.

## Brief information about the location

Mogendorf is the Steuler Group's newest site in the Westerwald. The modern halls are primarily used for composite piping systems, composite apparatus engineering and KERA production. Most of the around 50 employees in Mogendorf work in production. Large-scale photovoltaic collectors on 6,500 square meters of roof area ensure sustainable energy generation.

We would like to guide you safely through our factory site. To enable us to do this, a number of safety rules must be strictly observed. Please familiarize yourself with the listed rules and instructions and support us by acting prudently.

We wish you a **safe stay.**

## A LOOK AT THE LOCATION

# Mogendorf

### Check-in and check-out

When entering and leaving the company premises, please get in contact with our staff at the reception (**Building 001**).

Trained first aiders and defibrillators are available on site. In an emergency, speak to someone, the nearest first aider will call the emergency number. The defibrillator is available for collection in the hall (**Building 003-2**), near the time recorder.

Landline

**Emergency call** 0-112

**Reception** 375

Mobile

**Emergency call** 112

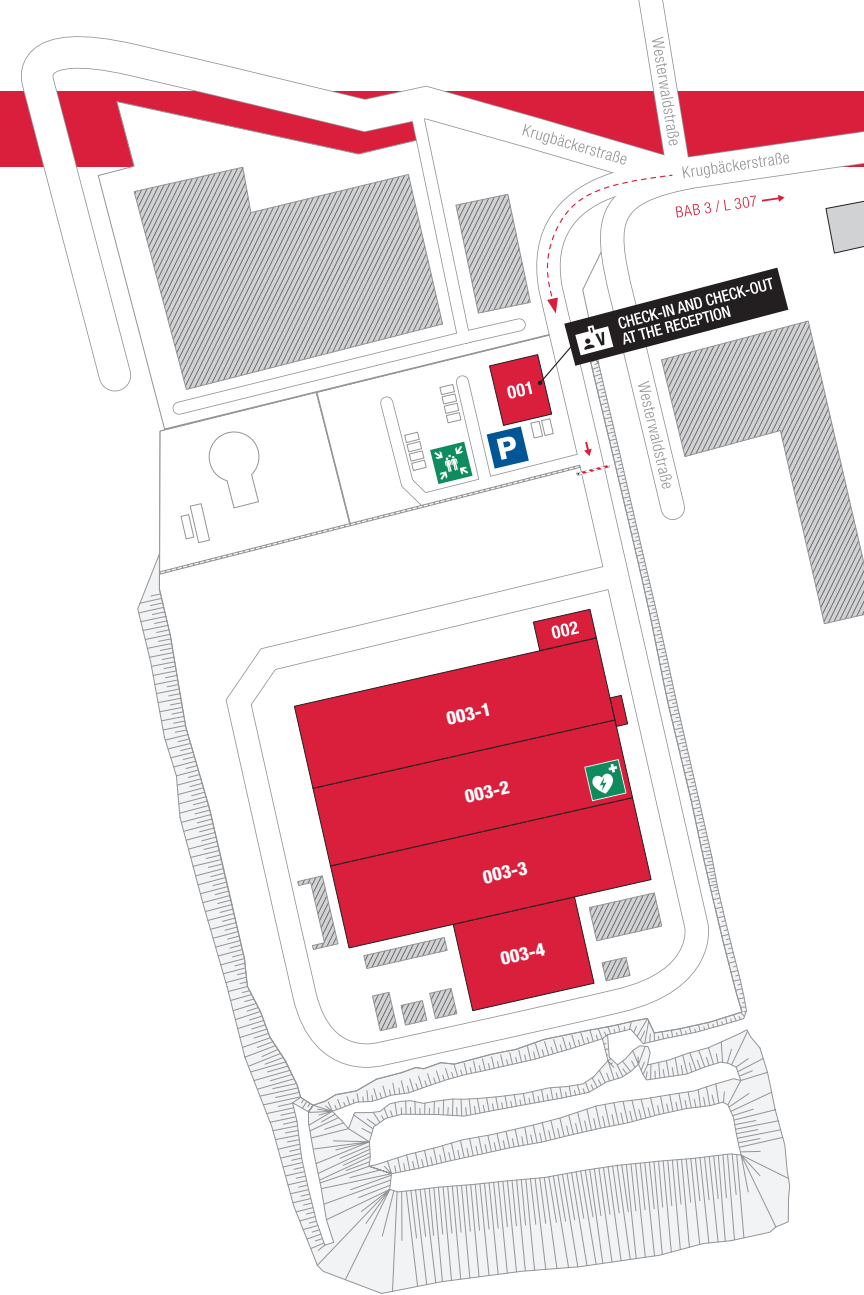
**Reception** (02623) 600-375

In the event of an alarm, leave the building via the **marked escape routes** without using elevators and go to the **nearest assembly point**.

It is forbidden for outsiders to enter the production facilities and storage rooms without escort or permission. Please observe the safety instructions in this flyer when taking a guided tour of our production facilities.

### Beware of forklift traffic!

Please always make eye contact and listen for signal tones.



## Digital site plan

Here you will always find the latest version of this safety flyer:

[linings.steuler.de/en](https://linings.steuler.de/en) ▶ Contact ▶ Safety flyer

